

# CHINESE LANTERN

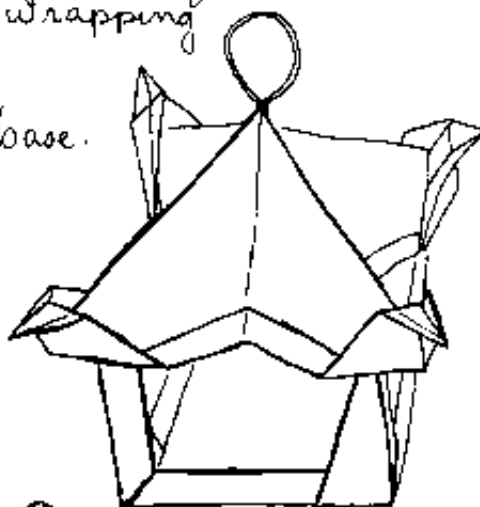
A  
F  
B  
5.  
4.  
00

This is a two-piece ornament which requires glue. The proportion of the pieces is 3:5. Use a 6" square of mono-color paper for the roof and a 10" square of origami paper for the base (15 cm = roof; 25 cm = base). I designed this model to be a prop in a play, and folded it twice the above sizes in brown wrapping paper.

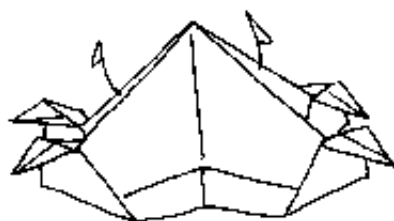
I ROOF: Fold a waterbomb base.



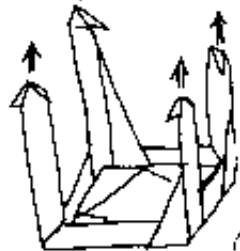
- ① VF from \* out to corners. (The star is approx  $\frac{1}{6}$  of the vertical). Repeat all around (must unfold one side to finish the fourth side.)



- ② Roof will not lie flat. ORF each corner.



- ④ Spread vanes evenly and glue base under roof (see p. 2 for base.)

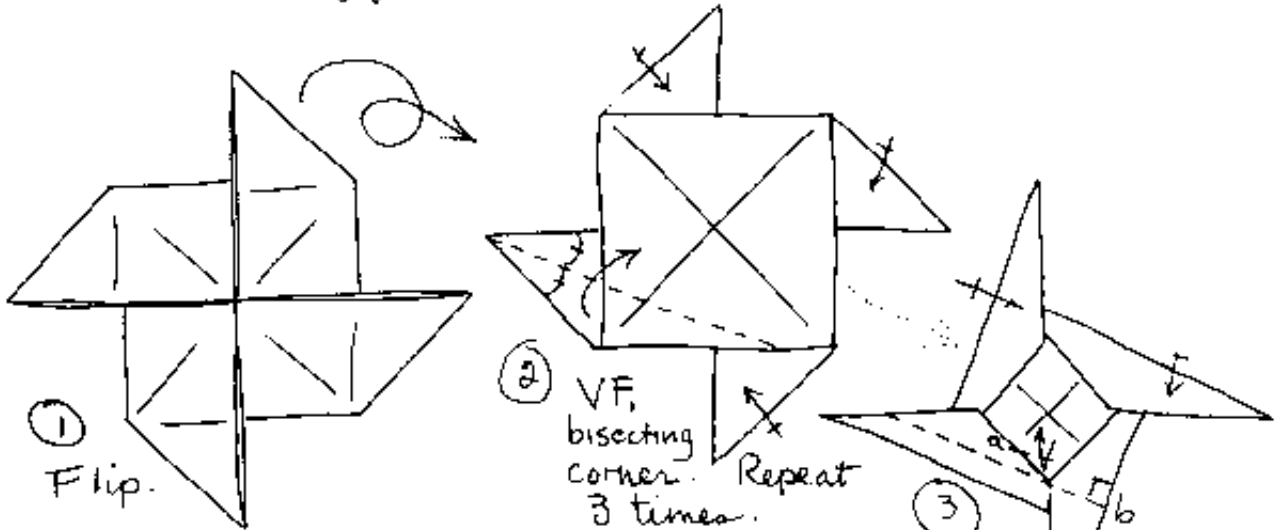


- ③ ORF each tip again to form birds' heads.

- ⑤ Add hanger to roof (a string, or a paper loop.) see p. 2

# Chinese Lantern, p. 2

II BASE: Fold a pinwheel base, i.e., WSU, FUF diagonals and cupboards; flip and FUF a blintz fold. Collapse into windmill.

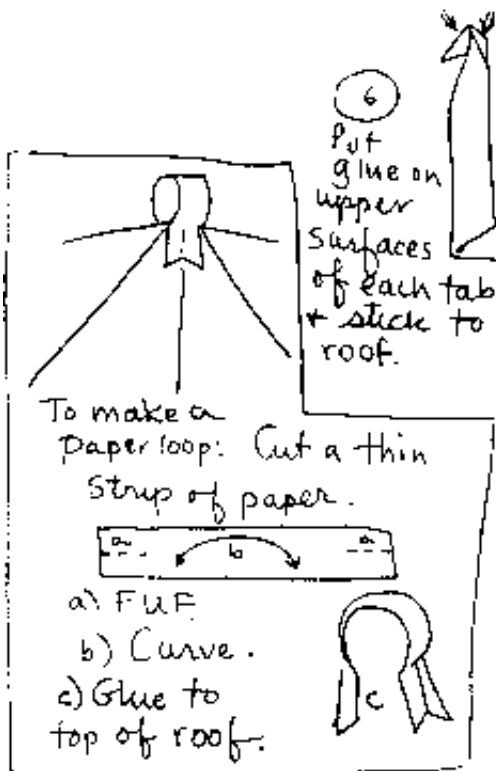


① Flip.

② VF, bisecting corner. Repeat 3 times.

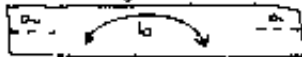
③

a) Bring edge to center + pinch; b) Bring edge to pinch mark + fold (note right angle). Unfold. Repeat 3 times.



⑥ Put glue on upper surfaces of each tab + stick to roof.

To make a paper loop: Cut a thin strip of paper.



a) FUF  
b) Curve.  
c) Glue to top of roof.



⑤ MTF each tip twice to form tab for gluing.

④

Gather points up on step 3 b's creases, taking a little tuck in at each upright's side. Glue tuck inside + outside. (Secure w/ clips until dry.)

Note tuck