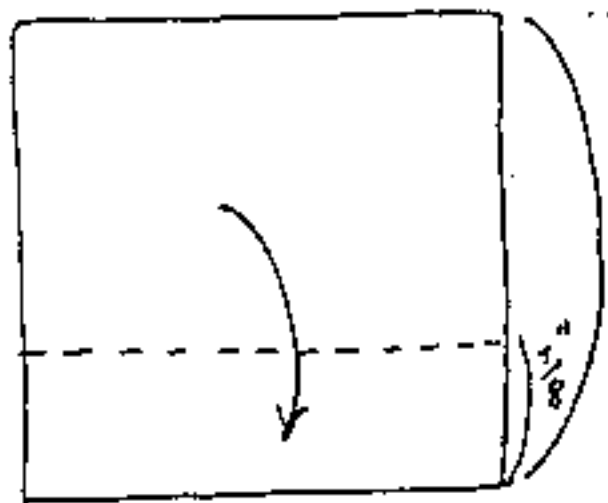
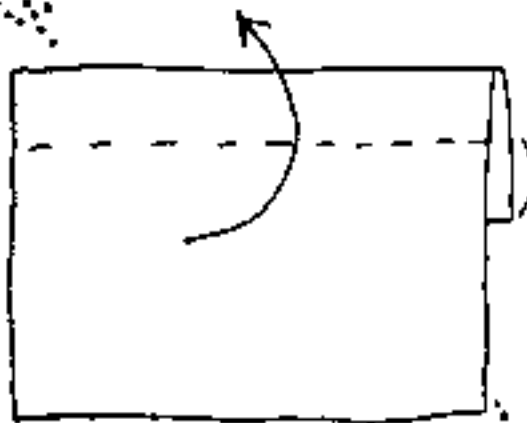


For a Snowlady folded from 6" paper, use a 2½-3" square for the hat; colored side up to start.

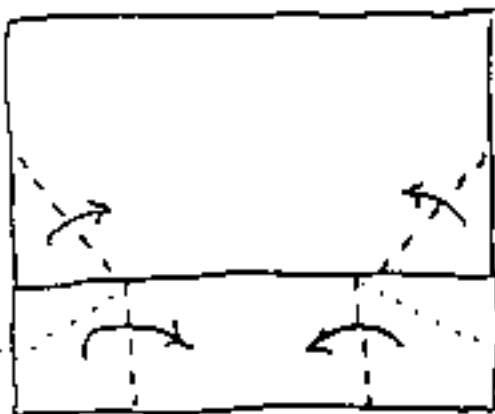
12
24
97



① Just shy of a third from the bottom edge, fold the paper down

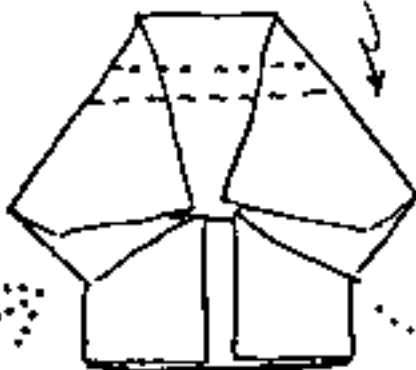
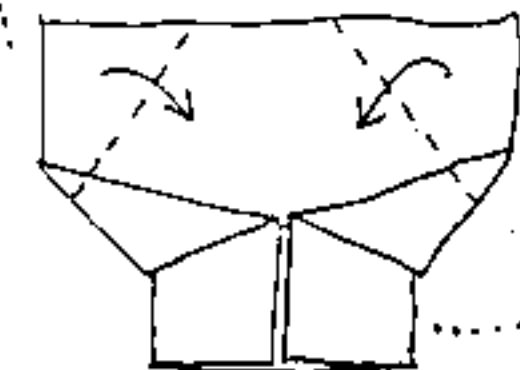


② Fold back up.



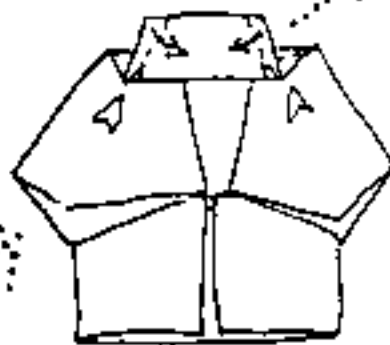
③ Turn paper over.

④ Fold sides of lower part to center, with an off-center squash fold above.

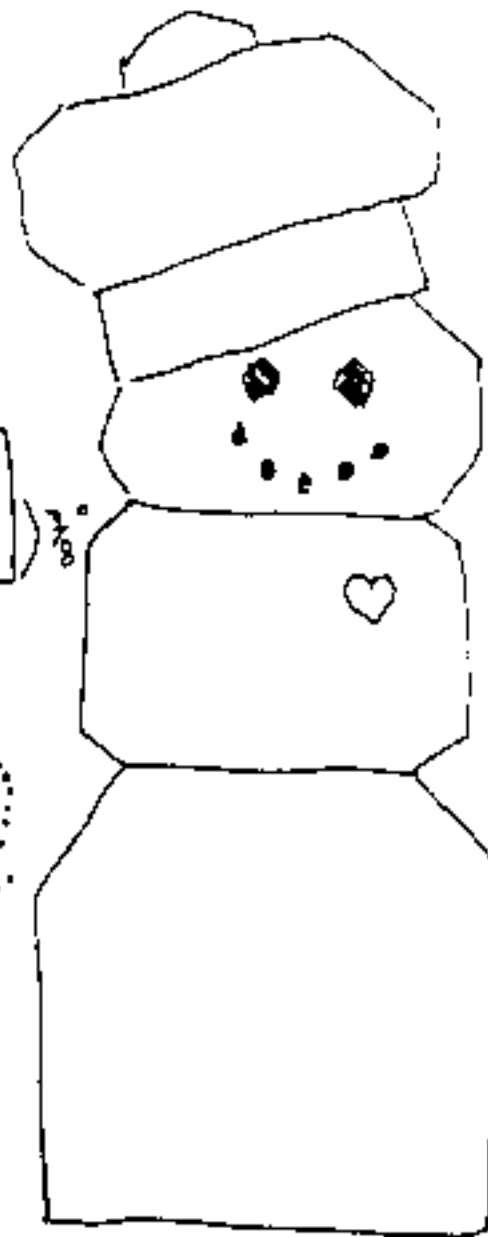


⑤ Fold sides in.

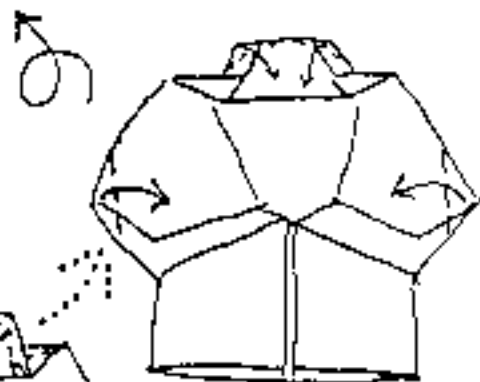
⑥ Pleat top.



⑦ Narrow and squash.



⑨ Slip cap onto snowlady's head.



⑧ Round off pom-pom + sides. Turn over.